

DID YOU KNOW?

about our... **XBolt® PRO Bi-Metal SS 316 Range**

Page 1 of 4



The Professional Range for concrete anchoring

XBolt® PROs are single unit screw type anchors that are used in solid concrete applications. Fixing is achieved by screwing the anchor into the hole. As it is screwed in, it creates its own undercut by tapping the concrete hole. The cutting and locking mechanism, enables the anchor to be used in close spacing and edge distance applications.

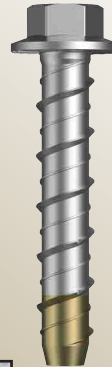
Features

- » Provides the advantages and benefits of 316 stainless plus the heat-treated alloy point.
- » Hardened alloy point for fast and consistent installation
- » Suitable for medium to heavy loads
- » Suitable for small anchor spacing and edge distance applications
- » Quick and easy to install
- » Fully removable

Applications

- » For high corrosion resistance- such as severe marine environments
- » Fertiliser facilities
- » Chemical and petrochemical plants
- » Pharmaceutical and brewery plants
- » Kitchens and food preparation

XBolt® PRO - HEX FLANGE BI-METAL 316 STAINLESS / ETA OPTION 1 / FIRE RATED



Part	QFind	Size (mm)	Length (mm)	Pack Qty
EXH6XP15M060080	EXH120	M6	80	50
EXH6XP15M080090	EXH121	M8	90	50
EXH6XP15M080100	EXH122	M8	100	50
EXH6XP15M100105	EXH123	M10	105	50
EXH6XP15M100120	EXH124	M10	120	50
EXH6XP15M120150	EXH125	M12	150	50

**NEW
PRODUCT**

PRO
XBolt

Bolt Tension | Anti-Vibration | Product Reliability | Traceability

hobson.com.au **QUALITY FASTENERS** SINCE 1935



DID YOU KNOW?

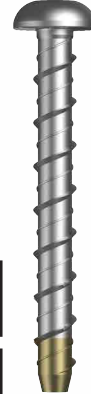
about our... **XBolt® PRO Bi-Metal SS 316 Range**

Page 2 of 4

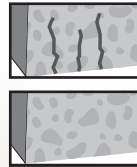


XBolt® PRO - DOME HEAD

BI-METAL 316 STAINLESS /
ETA OPTION 1 / FIRE RATED



Part	QFind	Size (mm)	Length (mm)	Drive Size	Pack Qty
EXD6XP15M060080	EXD101	M6	80	T40	50
EXD6XP15M080090	EXD102	M8	90	T40	50
EXD6XP15M080100	EXD103	M8	100	T40	50

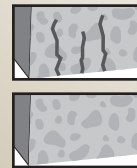


XBolt® PRO - CSK HEAD

BI-METAL 316 STAINLESS /
ETA OPTION 1 / FIRE RATED



Part	QFind	Size (mm)	Length (mm)	Drive Size	Pack Qty
EXK6XP15M060080	EXK101	M6	80	T40	50
EXK6XP15M080095	EXK102	M8	95	T40	50
EXK6XP15M080100	EXK103	M8	100	T40	50



**NEW
PRODUCT**

PRO
XBolt

Bolt Tension | Anti-Vibration | Product Reliability | Traceability

hobson.com.au **QUALITY FASTENERS** SINCE 1935



2002071DYK

DID YOU KNOW?

about our... **XBolt® PRO Bi-Metal SS 316 Range**

Page 3 of 4



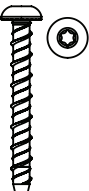
Label Sample



**BI-METAL 316 STAINLESS
XBOLT PRO - DOME HEAD
ETA OPTION 1 / FIRE RATED**

M6 x 80

QFind: **50 pcs**

EXD101








CONXTRACT - PRO

EXD6XP15M060080

DOC: 10013





PO: 75928 VM2
CTN WGT: 1.19kg

9 350629 123941
Hobson Engineering Co Pty Ltd, 10 Clay Place, Eastern Creek, NSW 2766, Australia

**NEW
PRODUCT**

**PRO
XBolt**

Logo's Explained



= ETA
European Technical Assessment



= Cracked concrete



= Fire resistance rated



= Non-cracked Concrete

CONXTRACT® - PRO Carton



Bolt Tension | Anti-Vibration | Product Reliability | Traceability

hobson.com.au **QUALITY FASTENERS SINCE 1935**



DID YOU KNOW?

about our... **XBolt® PRO Bi-Metal SS 316 Range**

Page 4 of 4



How to download ETA's

**NEW
PRODUCT**

CONSTRUCT PRO

1

2

3

DOC Link	Description	Prefix
10010	Hobson Drop In PRO Anchor Opt. 7	EDI / EDL
10010	Hobson Drop In PRO Anchor Part 8	EDI / EDL
10011	Hobson HIT PRO Splice Wedge Anchor	EHWMSZS37M
10012	Hobson XBolt PRO Hex. Concrete Screw Anchor	EXHMSR15M
10013	Hobson XBolt PRO Bi-Metal Screw Anchor 754	EX-6XP15M
10013	Hobson XBolt PRO Bi-Metal Screw Anchor 755	EX-6XP15M

BI-METAL 316 STAINLESS
XBOLT PRO - DOME HEAD
ETA OPTION 1 / FIRE RATED

M6 x 80

QFind: 50 pcs
EXD101

CONSTRUCT - PRO

EXD6XP15M060080 **DOC: 10013**

9 350629 123941

PO: 75928 VM2
CTN WGT: 1.19kg

4

Bolt Tension | Anti-Vibration | Product Reliability | Traceability

hobson.com.au **QUALITY FASTENERS SINCE 1935**

