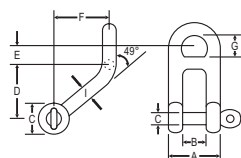


# Shackles



## "D" SHACKLE - DOUBLE BAR 316 STAINLESS

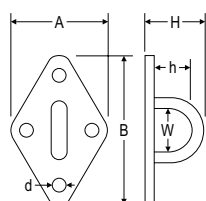
SH10

Part	C	D	A	B	G	I	Wgt (kg)	Price
HSH16DBM06	M6	27	24	12	11.25	7.0	0.05	\$ 35.00
HSH16DBM08	M8	36	32	16	15.00	8.8	0.10	\$ 44.00
HSH16DBM10	M10	45	40	20	18.75	10.7	0.11	\$ 67.00
HSH16DBM12	M12	54	48	24	22.50	12.5	0.32	\$ 94.00

## PIN REPLACEMENT 316 STAINLESS

SH10

Part	D	Wgt (kg)	Price
HXPINSM04	M4	0.01	\$ 3.70
HXPINSM05	M5	0.01	\$ 4.00
HXPINSM06	M6	0.01	\$ 4.30
HXPINSM08	M8	0.02	\$ 6.20
HXPINSM10	M10	0.03	\$ 9.50
HXPINSM12	M12	0.08	\$ 20.00
HXPINSM16	M16	0.11	\$ 40.00

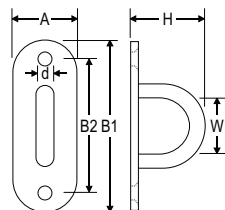


## PAD EYE - DIAMOND 304 STAINLESS

SH10

Part	A	B	H	h	W	d	Wgt (kg)	Price
HEP04DI-05	37	59	22	12	11	4.2	0.03	\$ 9.80
HEP04DI-06	40	64	26	15	15	4.2	0.05	\$ 15.00
HEP04DI-08	50	80	33	20	18	5.2	0.07	\$ 23.00

**NEW!**



## PAD EYE - OVAL 304 STAINLESS

SH10

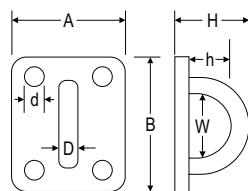
Part	A	B1	B2	H	W	d	Wgt (kg)	Price
HEP04OV-05	15	54	38	22	16	5	0.02	\$ 10.00
HEP04OV-06	19	65	46	28	16	5	0.05	\$ 13.00

# Pad Eyes



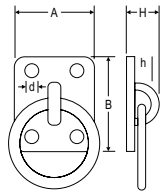
## PAD EYE - OBLONG 304 STAINLESS SH10

Part	A	B	H	h	W	d	Wgt (kg)	Price
HEP04OB-05	30	35	19	12	14	4.2	0.03	\$ 7.50
HEP04OB-06	35	40	26	17	18	4.2	0.04	\$ 9.00
HEP04OB-08	40	50	33	22	20	5.2	0.06	\$ 15.00



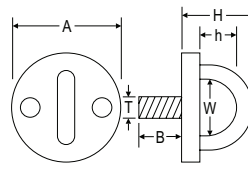
## PAD EYE - OBLONG WITH RING 304 STAINLESS SH10

Part	A	B	H	h	W	d	Wgt (kg)	Price
HEP04OR-05	30	35	19	12	14	4.2	0.04	\$ 10.00
HEP04OR-06	35	40	26	17	18	4.2	0.07	\$ 13.00
HEP04OR-08	40	50	33	22	20	5.2	0.13	\$ 19.00



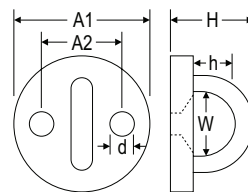
## PAD EYE - ROUND EYE BOLT 304 STAINLESS SH10

Part	T	A	H	h	W	B	Wgt (kg)	Price
HEP04RB-05	M6	33	20	12	13	20	0.03	\$ 11.00
HEP04RB-06	M8	40	26	17	17	23	0.05	\$ 13.00
HEP04RB-08	M10	50	32	20	20	25	0.08	\$ 19.00



## PAD EYE - ROUND 304 STAINLESS SH10

Part	A1	A2	H	h	W	d	Wgt (kg)	Price
HEP04RD-05	33	19.5	20	12	13	4.2	0.02	\$ 8.00
HEP04RD-06	40	23.0	26	17	17	4.2	0.04	\$ 9.50
HEP04RD-08	50	29.5	32	21	20	5.2	0.07	\$ 15.00



## PAD EYE - ROUND OPEN 304 STAINLESS SH10

Part	H	A1	d	GAP	Wgt (kg)	Price
HEP04RO-05	20	33	4.5	8.5	0.02	\$ 8.00

