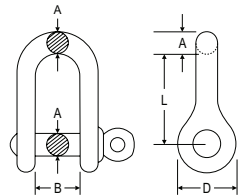


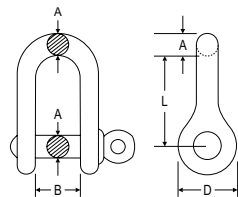
Shackles



“D” SHACKLE 316 STAINLESS

SH10

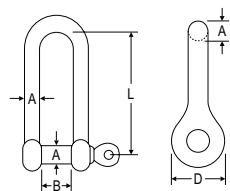
Part	A	L	B	D	Wgt (kg)	Price
HSH16DSM04	M4	16	8	8	0.01	\$ 7.10
HSH16DSM05	M5	20	10	10	0.01	\$ 9.00
HSH16DSM06	M6	24	12	12	0.02	\$ 9.80
HSH16DSM08	M8	32	16	16	0.06	\$ 15.00
HSH16DSM10	M10	40	20	20	0.11	\$ 21.00
HSH16DSM12	M12	48	24	24	0.19	\$ 35.00
HSH16DSM16	M16	64	32	32	0.44	\$ 65.00
HSH16DSM19	M19	76	38	38	0.89	\$ 98.00



“D” SHACKLE WITH CAPTIVE PIN 316 STAINLESS

SH10

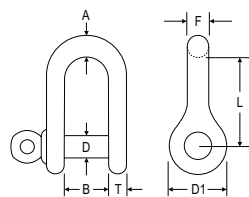
Part	A	L	B	D	Wgt (kg)	Price
HSH16CPM05	M5	20	10	10	0.01	\$ 10.00
HSH16CPM06	M6	24	12	12	0.02	\$ 13.00
HSH16CPM08	M8	32	16	16	0.06	\$ 17.00
HSH16CPM10	M10	40	20	20	0.10	\$ 25.00
HSH16CPM12	M12	48	24	24	0.11	\$ 35.00



“D” SHACKLE - LONG 316 STAINLESS

SH10

Part	A	L	B	D	Wgt (kg)	Price
HSH16LGM04	M4	32.0	8.0	8.0	0.01	\$ 11.00
HSH16LGM05	M5	40.0	10.0	10.0	0.02	\$ 13.00
HSH16LGM06	M6	48.0	12.0	12.0	0.04	\$ 15.00
HSH16LGM08	M8	64.0	16.0	16.0	0.01	\$ 26.00
HSH16LGM10	M10	80.0	20.0	20.0	0.15	\$ 38.00
HSH16LGM12	M12	96.0	24.0	24.0	0.27	\$ 60.00



“D” SHACKLE - LIGHT WEIGHT 304 STAINLESS

SH10

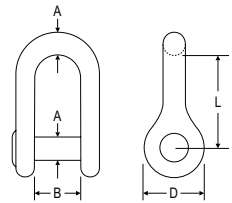
Part	D	L	B	F	D1	T	Wgt (kg)	Price
HSH04LWM04	M4	22	10	5.5	9.5	1.8	0.01	\$ 3.50
HSH04LWM05	M5	28	12	7.8	12.0	2.0	0.01	\$ 5.50
HSH04LWM06	M6	30	14	8.5	14.6	3.0	0.02	\$ 8.50
HSH04LWM08	M8	48	18	10.5	18.0	4.0	0.06	\$ 17.00

Shackles



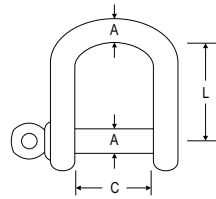
“D” SHACKLE WITH INTERNAL HEX PIN SH10 316 STAINLESS

Part	A	L	B	D	Wgt (kg)	Price
HSH16HPM06	M6	24	12	12	0.02	\$ 12.00
HSH16HPM08	M8	32	16	16	0.05	\$ 18.00
HSH16HPM10	M10	40	20	20	0.10	\$ 25.00
HSH16HPM12	M12	48	24	24	0.18	\$ 42.00



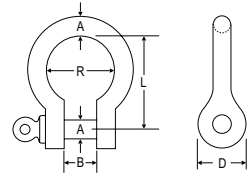
SHACKLE - WIDE OPENING MOUTH SH10 316 STAINLESS

Part	A	L	C	Wgt (kg)	Price
HSH16WMM06	M6	36	24	0.03	\$ 16.00
HSH16WMM08	M8	48	32	0.07	\$ 22.00
HSH16WMM10	M10	60	40	0.15	\$ 33.00
HSH16WMM12	M12	72	48	0.26	\$ 54.00



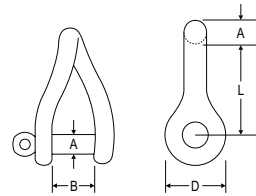
SHACKLE - BOW SH10 316 STAINLESS

Part	A	L	B	R	D	Wgt (kg)	Price
HSH16BWM05	M5	20	8	17	10	0.02	\$ 11.00
HSH16BWM06	M6	24	12	21	12	0.02	\$ 12.00
HSH16BWM08	M8	32	16	28	16	0.07	\$ 18.00
HSH16BWM10	M10	40	20	34	20	0.13	\$ 25.00
HSH16BWM12	M12	48	24	42	24	0.21	\$ 38.00
HSH16BWM16	M16	64	32	56	32	0.52	\$ 90.00
HSH16BWM22	M22	88	44	77	44	1.31	\$ 200.00

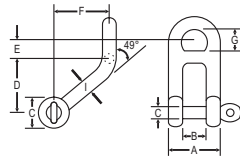


SHACKLE - TWISTED SH10 316 STAINLESS

Part	A	L	B	D	Wgt (kg)	Price
HSH16TWM04	M4	24	8	14	0.01	\$ 8.90
HSH16TWM05	M5	20	10	17	0.01	\$ 10.00
HSH16TWM06	M6	24	12	21	0.05	\$ 13.00
HSH16TWM08	M8	32	16	28	0.07	\$ 23.00
HSH16TWM10	M10	40	20	34	0.13	\$ 29.00
HSH16TWM12	M12	48	24	42	0.22	\$ 50.00



Shackles



"D" SHACKLE - DOUBLE BAR 316 STAINLESS

SH10

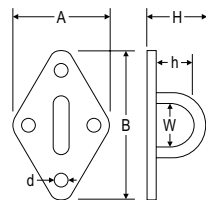
Part	C	D	A	B	G	I	Wgt (kg)	Price
HSH16DBM06	M6	27	24	12	11.25	7.0	0.05	\$ 35.00
HSH16DBM08	M8	36	32	16	15.00	8.8	0.10	\$ 44.00
HSH16DBM10	M10	45	40	20	18.75	10.7	0.11	\$ 67.00
HSH16DBM12	M12	54	48	24	22.50	12.5	0.32	\$ 94.00



PIN REPLACEMENT 316 STAINLESS

SH10

Part	D	Wgt (kg)	Price
HXPINSM04	M4	0.01	\$ 3.70
HXPINSM05	M5	0.01	\$ 4.00
HXPINSM06	M6	0.01	\$ 4.30
HXPINSM08	M8	0.02	\$ 6.20
HXPINSM10	M10	0.03	\$ 9.50
HXPINSM12	M12	0.08	\$ 20.00
HXPINSM16	M16	0.11	\$ 40.00

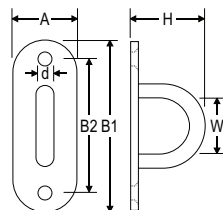


PAD EYE - DIAMOND 304 STAINLESS

SH10

Part	A	B	H	h	W	d	Wgt (kg)	Price
HEP04DI-05	37	59	22	12	11	4.2	0.03	\$ 9.80
HEP04DI-06	40	64	26	15	15	4.2	0.05	\$ 15.00
HEP04DI-08	50	80	33	20	18	5.2	0.07	\$ 23.00

NEW!



PAD EYE - OVAL 304 STAINLESS

SH10

Part	A	B1	B2	H	W	d	Wgt (kg)	Price
HEP04OV-05	15	54	38	22	16	5	0.02	\$ 10.00
HEP04OV-06	19	65	46	28	16	5	0.05	\$ 13.00