

Disclaimer: Images are for illustrative purposes.

Bow Dee Shackle

Pin Type: Removable Pin

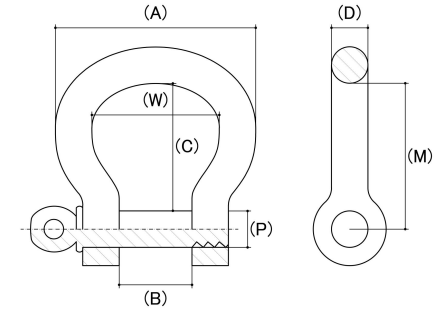
Material: Stainless Steel

Class Grade: A4-70 G316

Corrosion Protection Level: Ultimate

Standard: No International standard applies to this range

Comments: This product range is not rated and has no markings. Breaking load information provided is to be used as a guide only



Size	Inside Eye Width (W) (mm)		Width Of Opening (B) (mm)		Outside Diameter Of Eye (A) (mm)		Inside Eye Length (C) (mm)		Inside Eye Length to Pin Centre (M) (mm)		Pin Diameter (P) (mm)	Breaking Load Kgs (Not Rated Guide only)	sku (Part Number)
	Min	Max	Min	Max	Min	Max	Min	Max	Min	Max		Nom	
5mm	15.00	17.00	8.00	10.00	23.50	25.50	19.00	21.00	21.00	23.00	5.00	1200	62DSBS520M
6mm	18.40	20.40	11.00	13.00	28.00	30.00	23.00	25.00	25.00	27.00	6.00	1700	62DSBS624M
8mm	24.40	27.40	15.00	17.00	38.00	40.00	31.00	33.00	34.00	36.00	8.00	2500	62DSBS832M
10mm	31.00	34.00	19.50	20.50	49.00	51.00	39.00	41.00	44.00	47.00	10.00	4300	62DSBS1040M
12mm	37.40	41.40	24.00	26.00	58.00	60.00	47.00	50.00	51.00	54.00	12.00	6200	62DSBS1248M
16mm	54.00	58.00	32.00	34.00	85.00	87.00	62.00	65.00	70.00	73.00	16.00	9200	62DSBS1664M
22mm	66.00	72.00	43.00	45.00	107.00	109.00	84.00	87.00	94.00	97.00	22.00	18000	62DSBS2288M

Disclaimer:

Dimensional data and technical information was obtained from publically available sources and not acquired through standard agencies. It has been completed and compiled for reference purposes only; where discrepancies are found they are subject to change without notice. Bolt & Nut Australia makes no warranties or representations regarding the accuracy and validity of the compiled information and data. Contact the relevant standard authorities for accurate and detailed information.

© Bolt & Nut Australia Pty Ltd. All rights reserved.

Version: 19 Mar 2026