

*Disclaimer: Images are for illustrative purposes.*

## Socket Allen Screw

**Head Style:** Button Head

**Drive Type:** Internal Hex

**Thread Type:** Metric - Coarse

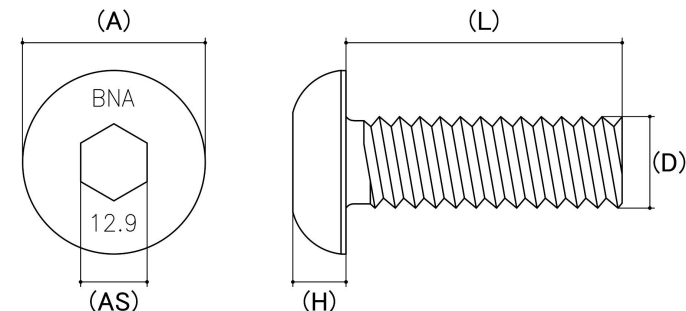
**Material:** Alloy Steel Heat Treated

**Class Grade:** High Tensile Class 12.9

**Finish:** Plain Black Uncoated

**Corrosion Protection Level:** Very Low

**Standard:** ISO 7380



Size	Thread Pitch (mm)	Thread Type	Product Diameter (D) (mm)		Head Diameter (A) (mm)		Head Height (H) (mm)		Driver Bit Size (AS) (mm)	sku (Part Number)
			Min	Max	Min	Max	Min	Max		
M2.5	0.45mm	Coarse	2.38	2.48	4.10	4.60	1.15	1.37	1	31B25P
M3	0.50mm	Coarse	2.87	2.98	5.40	5.70	1.40	1.65	2	31B3P
M4	0.70mm	Coarse	3.83	3.97	7.24	7.60	1.95	2.20	2	31B4P
M5	0.80mm	Coarse	4.82	5.00	9.14	9.50	2.50	2.75	3	31B5P
M6	1.00mm	Coarse	5.82	6.00	10.07	10.50	3.00	3.30	4	31B6P
M8	1.25mm	Coarse	7.78	8.00	13.57	14.00	4.05	4.40	5	31B8P
M10	1.50mm	Coarse	9.78	10.00	17.07	17.50	5.20	5.50	6	31B10P
M12	1.75mm	Coarse	11.73	12.00	20.48	21.00	6.24	6.60	8	31B12P

**Disclaimer:**

Dimensional data and technical information was obtained from publically available sources and not acquired through standard agencies. It has been completed and compiled for reference purposes only; where discrepancies are found they are subject to change without notice. Bolt & Nut Australia makes no warranties or representations regarding the accuracy and validity of the compiled information and data. Contact the relevant standard authorities for accurate and detailed information.

© Bolt & Nut Australia Pty Ltd. All rights reserved.

Version: 17 Mar 2026