

*Disclaimer: Images are for illustrative purposes.*

## Strut / Channel Nut

**Thread Type:** Metric - Coarse

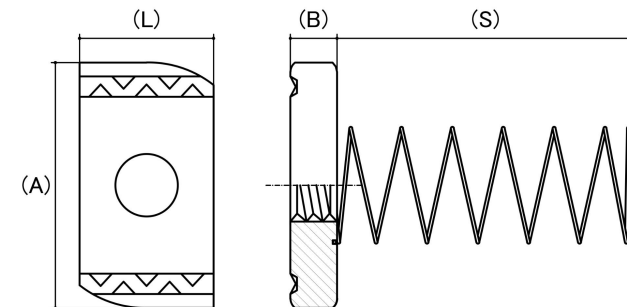
**Thread Direction:** Right Hand

**Material:** Carbon Steel

**Class Grade:** Low Tensile Class 4.6

**Finish:** Galvanised

**Corrosion Protection Level:** Excellent



Size	Thread Pitch (mm)	Thread Type	Overall Nut Height (B) (mm)		Nut Length (L) (mm)		Nut Width (A) (mm)		Spring length (S) (mm)	sku (Part Number)
			Min	Max	Min	Max	Min	Max	Nom	
M6	1.00mm	Coarse	7.90	8.10	18.00	20.00	34.00	34.60	40.00	41SN6LG
M8	1.25mm	Coarse	7.90	8.10	18.00	20.00	34.00	34.60	40.00	41SN8LG
M10	1.50mm	Coarse	9.10	9.30	18.00	20.00	34.00	34.60	40.00	41SN10LG
M12	1.75mm	Coarse	11.70	11.90	18.00	20.00	34.00	34.60	40.00	41SN12LG
M16	2.00mm	Coarse	10.70	11.40	28.00	30.00	34.00	34.60	40.00	41SN16LG

**Disclaimer:**

Dimensional data and technical information was obtained from publically available sources and not acquired through standard agencies. It has been completed and compiled for reference purposes only; where discrepancies are found they are subject to change without notice. Bolt & Nut Australia makes no warranties or representations regarding the accuracy and validity of the compiled information and data. Contact the relevant standard authorities for accurate and detailed information.

© Bolt & Nut Australia Pty Ltd. All rights reserved.

Version: 17 Mar 2026