

Disclaimer: Images are for illustrative purposes.

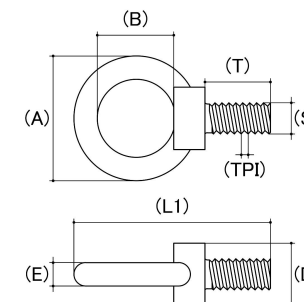
Eye Bolt Collar

Material: Stainless Steel

Class Grade: A4-70 G316

Corrosion Protection Level: Ultimate

Comments: This product range is not rated and has no markings. Breaking load information provided is to be used as a guide only



| Size | Thread Pitch (mm) | Thread Type | Length L (1) (mm) | | Thread Length (T) (mm) | | Collar Width (D) (mm) | | Inside dia. of Eye (B) (mm) | | Width (A) (mm) | | Thickness Of Eye (E) (mm) | | Breaking Load Kgs (Not Rated Guide only) Nom | sku (Part Number) |
|------|-------------------|-------------|-------------------|--------|------------------------|-------|-----------------------|-------|-----------------------------|-------|----------------|-------|---------------------------|-------|---|-------------------|
| | | | Min | Max | Min | Max | Min | Max | Min | Max | Min | Max | Min | Max | | |
| M6 | 1.00mm | Coarse | 40.00 | 41.00 | 12.50 | 13.00 | 12.00 | 13.00 | 16.00 | 17.00 | 26.00 | 27.00 | 4.70 | 5.20 | 1100 | 61CEBS611M |
| M8 | 1.25mm | Coarse | 48.00 | 49.00 | 14.50 | 15.00 | 14.00 | 16.00 | 20.00 | 21.00 | 32.00 | 33.00 | 5.70 | 6.20 | 1800 | 61CEBS815M |
| M10 | 1.50mm | Coarse | 58.00 | 59.00 | 17.70 | 18.40 | 18.00 | 20.00 | 25.00 | 26.00 | 39.00 | 41.00 | 7.20 | 7.70 | 2000 | 61CEBS1021M |
| M12 | 1.75mm | Coarse | 72.00 | 73.00 | 20.60 | 21.30 | 22.00 | 24.00 | 30.00 | 31.00 | 48.00 | 50.00 | 9.50 | 10.00 | 3000 | 61CEBS1223M |
| M16 | 2.00mm | Coarse | 86.00 | 87.00 | 25.70 | 26.40 | 27.00 | 30.00 | 34.00 | 35.00 | 58.00 | 60.00 | 12.10 | 12.60 | 6500 | 61CEBS1625M |
| M20 | 2.50mm | Coarse | 98.00 | 100.00 | 28.70 | 29.40 | 30.00 | 32.00 | 39.00 | 40.00 | 68.00 | 70.00 | 14.90 | 15.50 | 9000 | 61CEBS2032M |
| M24 | 3.00mm | Coarse | 122.00 | 124.00 | 38.70 | 39.40 | 48.00 | 50.00 | 49.00 | 50.00 | 87.00 | 89.00 | 19.00 | 19.70 | 11000 | 61CEBS2440M |

Disclaimer:

Dimensional data and technical information was obtained from publically available sources and not acquired through standard agencies. It has been completed and compiled for reference purposes only; where discrepancies are found they are subject to change without notice. Bolt & Nut Australia makes no warranties or representations regarding the accuracy and validity of the compiled information and data. Contact the relevant standard authorities for accurate and detailed information.

© Bolt & Nut Australia Pty Ltd. All rights reserved.

Version: 19 Mar 2026