

Disclaimer: Images are for illustrative purposes.

JCB Flat Socket Barrel Nut

Thread Type: Metric - Coarse

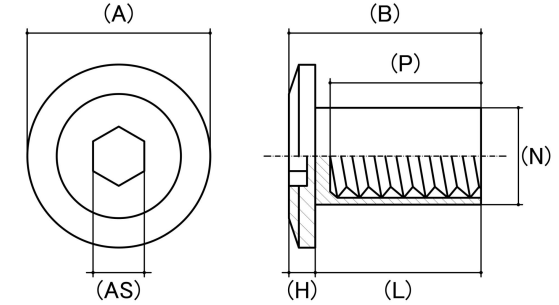
Thread Direction: Right Hand

Drive Type: Internal Hex

Material: Stainless Steel

Class Grade: A2-70 G304

Corrosion Protection Level: Excellent



Size	Thread Pitch (mm)	Thread Type	Overall Nut Height (B) (mm)	Barrel Length (L) (mm)	Head Diameter (A) (mm)		Head Height (H) (mm)		Body Diameter (N) (mm)	Internal Thread Depth (P) (mm)	Driver Bit Size (AS) (mm)	sku (Part Number)
			Nom	Nom	Min	Max	Min	Max	Nom	Nom		
M6	1.00mm	Coarse	14.70	12.21	13.05	13.35	2.40	2.50	7.75	10.60	4	41FCS6

Disclaimer:

Dimensional data and technical information was obtained from publically available sources and not acquired through standard agencies. It has been completed and compiled for reference purposes only; where discrepancies are found they are subject to change without notice. Bolt & Nut Australia makes no warranties or representations regarding the accuracy and validity of the compiled information and data. Contact the relevant standard authorities for accurate and detailed information.

© Bolt & Nut Australia Pty Ltd. All rights reserved.

Version: 17 Mar 2026