

*Disclaimer: Images are for illustrative purposes.*

## Self Tapping Screw

**Head Style:** Pan Head

**Drive Type:** Phillips

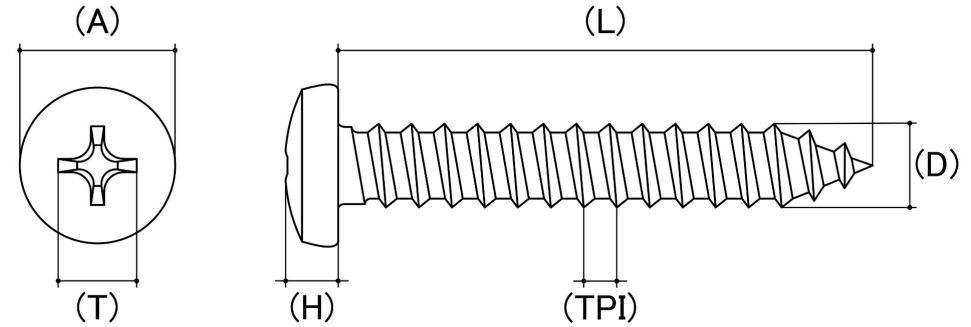
**Class Grade:** Hardened Steel

**Finish:** Zinc Plated

**Material:** Hardened Steel

**Corrosion Protection Level:** Moderate

**Standard:** AB ANSI B18.6.4



Size	Thread Pitch (TPI)	Product Diameter (D) (mm)		Head Diameter (A) (mm)		Head Height (H) (mm)		Driver Bit Size (AS)	sku (Part Number)
		Min	Max	Min	Max	Min	Max		
2g (2.20mm)	32 TPI	2.08	2.24	3.98	4.20	1.66	1.99	PH1	01P2
4g (2.90mm)	24 TPI	2.74	2.90	5.21	5.57	1.76	2.11	PH1	01P4
6g (3.50mm)	20 TPI	3.35	3.53	6.51	6.86	2.14	2.54	PH2	01P6
8g (4.20mm)	18 TPI	4.04	4.22	7.78	8.18	2.67	2.93	PH2	01P8
10g (4.80mm)	16 TPI	4.62	4.80	9.07	9.48	3.10	3.38	PH2	01P10
12g (5.50mm)	14 TPI	5.28	5.46	10.34	10.80	3.54	3.84	PH3	01P12
14g (6.30mm)	14 TPI	6.02	6.30	12.02	12.50	4.12	4.45	PH3	01P14

**Disclaimer:**

Dimensional data and technical information was obtained from publically available sources and not acquired through standard agencies. It has been completed and compiled for reference purposes only; where discrepancies are found they are subject to change without notice. Bolt & Nut Australia makes no warranties or representations regarding the accuracy and validity of the compiled information and data. Contact the relevant standard authorities for accurate and detailed information.

© Bolt & Nut Australia Pty Ltd. All rights reserved.

Version: 17 Mar 2026