

*Disclaimer: Images are for illustrative purposes.*

## Shear Nut

**Thread Type:** Metric - Coarse

**Thread Direction:** Right Hand

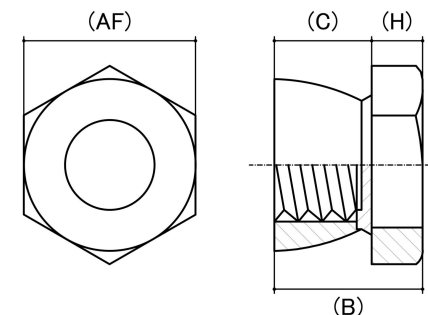
**Material:** Carbon Steel

**Class Grade:** Low Tensile Class 5

**Finish:** Galvanised

**Corrosion Protection Level:** Excellent

**Standard:** HEC Standard



Size	Thread Pitch (mm)	Thread Type	Overall Nut Height (B) (mm)		Hex Height (H) (mm)	Cone Height (C) (mm)		Across Flats (AF) (mm)		Spanner Size (AF) (mm)	sku (Part Number)
			Min	Max	Nom	Min	Max	Min	Max		
M8	1.25mm	Coarse	12.80	13.30	7.80	6.65	6.95	16.73	17.00	17mm	41SH8G
M10	1.50mm	Coarse	14.80	15.30	9.50	8.65	9.15	18.67	19.00	19mm	41SH10G
M12	1.75mm	Coarse	16.20	16.70	9.50	9.35	9.85	21.67	22.00	22mm	41SH12G
M16	2.00mm	Coarse	20.80	21.40	13.50	12.95	13.45	26.16	27.00	27mm	41SH16G
M20	2.50mm	Coarse	22.60	23.10	14.00	14.95	15.45	29.16	30.00	30mm	41SH20G

**Disclaimer:**

Dimensional data and technical information was obtained from publicly available sources and not acquired through standard agencies. It has been completed and compiled for reference purposes only; where discrepancies are found they are subject to change without notice. Bolt & Nut Australia makes no warranties or representations regarding the accuracy and validity of the compiled information and data. Contact the relevant standard authorities for accurate and detailed information.

© Bolt & Nut Australia Pty Ltd. All rights reserved.

Version: 17 Mar 2026