

Disclaimer: Images are for illustrative purposes.

Shear Nut

Thread Type: Metric - Coarse

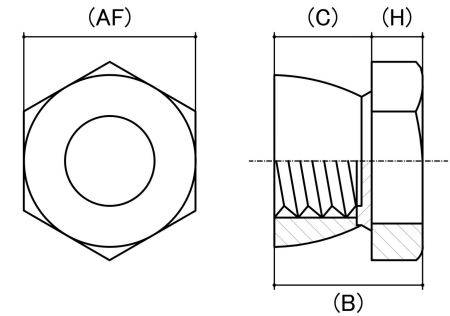
Thread Direction: Right Hand

Material: Stainless Steel

Class Grade: A2-70 G304

Corrosion Protection Level: Excellent

Standard: HEC Standard



| Size | Thread Pitch (mm) | Thread Type | Overall Nut Height (B) (mm) | Hex Height (H) (mm) | Cone Height (C) (mm) | | Across Flats (AF) (mm) | | Spanner Size (AF) (mm) | sku (Part Number) |
|------|-------------------|-------------|-----------------------------|---------------------|----------------------|-------|------------------------|-------|------------------------|-------------------|
| | | | Nom | Nom | Min | Max | Min | Max | | |
| M6 | 1.00mm | Coarse | 9.50 | 3.65 | 5.50 | 6.00 | 9.78 | 10.00 | 10mm | 41SHS6 |
| M8 | 1.25mm | Coarse | 11.80 | 4.45 | 7.50 | 8.00 | 12.73 | 13.00 | 13mm | 41SHS8 |
| M10 | 1.50mm | Coarse | 15.00 | 5.25 | 9.50 | 10.00 | 16.73 | 17.00 | 17mm | 41SHS10 |
| M12 | 1.75mm | Coarse | 19.00 | 5.50 | 11.50mm | - | 18.73 | 19.00 | 19mm | 41SHS12 |

Disclaimer:

Dimensional data and technical information was obtained from publically available sources and not acquired through standard agencies. It has been completed and compiled for reference purposes only; where discrepancies are found they are subject to change without notice. Bolt & Nut Australia makes no warranties or representations regarding the accuracy and validity of the compiled information and data. Contact the relevant standard authorities for accurate and detailed information.

© Bolt & Nut Australia Pty Ltd. All rights reserved.

Version: 17 Mar 2026