

Disclaimer: Images are for illustrative purposes.

Shear Nut

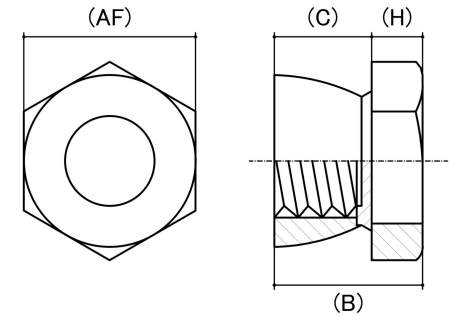
Thread Type: Metric - Coarse

Thread Direction: Right Hand

Material: Stainless Steel

Class Grade: A4-70 G316

Corrosion Protection Level: Ultimate



Size	Thread Pitch (mm)	Thread Type	Overall Nut Height (B) (mm)	Hex Height (H) (mm)	Cone Height (C) (mm)	Across Flats (AF) (mm)		Spanner Size (AF) (mm)	sku (Part Number)
			Nom	Nom	Nom	Min	Max		
M6	1.00mm	Coarse	9.50	3.50	6.00	9.78	10.00	10mm	41SHS6M
M8	1.25mm	Coarse	12.00	4.00	8.00	12.73	13.00	13mm	41SHS8M
M10	1.50mm	Coarse	15.00	5.00	10.00	16.73	17.00	17mm	41SHS10M
M12	1.75mm	Coarse	16.00	5.50	10.50	18.73	19.00	19mm	41SHS12M

Disclaimer:

Dimensional data and technical information was obtained from publically available sources and not acquired through standard agencies. It has been completed and compiled for reference purposes only; where discrepancies are found they are subject to change without notice. Bolt & Nut Australia makes no warranties or representations regarding the accuracy and validity of the compiled information and data. Contact the relevant standard authorities for accurate and detailed information.

© Bolt & Nut Australia Pty Ltd. All rights reserved.

Version: 17 Mar 2026