

Disclaimer: Images are for illustrative purposes.

Standard Dee Shackle

Pin Type: Removable Pin

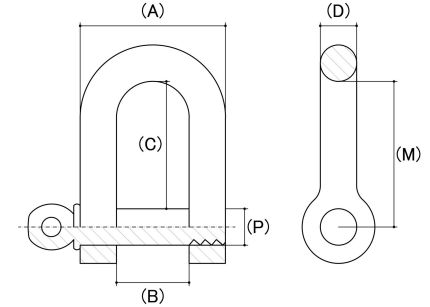
Material: Stainless Steel

Class Grade: A4-70 G316

Corrosion Protection Level: Ultimate

Standard: No International standard applies to this range

Comments: This product range is not rated and has no markings. Breaking load information provided is to be used as a guide only



Size	Width Of Opening (B) (mm)		Outside Diameter Of Eye (A) (mm)		Inside Eye Length (C) (mm)		Inside Eye Length to Pin Centre (M) (mm)		Pin Diameter (P) (mm)	Breaking Load Kgs (Not Rated Guide only)	sku (Part Number)
	Min	Max	Min	Max	Min	Max	Min	Max		Nom	
4mm	8.00	10.00	15.00	17.00	15.00	17.00	16.00	18.00	4.00	550	62DSS416M
5mm	9.00	11.00	19.00	21.00	17.00	19.00	19.00	21.00	5.00	1000	62DSS520M
6mm	12.00	14.00	23.00	25.00	19.00	21.00	23.00	25.00	6.00	1700	62DSS624M
8mm	15.00	17.00	30.00	32.00	28.00	30.00	32.00	34.00	8.00	2500	62DSS832M
10mm	20.00	22.00	38.00	40.00	35.00	37.00	41.00	43.00	10.00	4100	62DSS1040M
12mm	25.00	27.00	46.00	48.00	41.00	43.00	49.00	51.00	12.00	5400	62DSS1248M
16mm	33.00	35.00	63.00	65.00	57.00	59.00	65.00	67.00	16.00	8800	62DSS1664M
19mm	37.00	39.00	74.00	76.00	67.00	69.00	76.00	78.00	19.00	10000	62DSS1976M

Disclaimer:

Dimensional data and technical information was obtained from publically available sources and not acquired through standard agencies. It has been completed and compiled for reference purposes only; where discrepancies are found they are subject to change without notice. Bolt & Nut Australia makes no warranties or representations regarding the accuracy and validity of the compiled information and data. Contact the relevant standard authorities for accurate and detailed information.

© Bolt & Nut Australia Pty Ltd. All rights reserved.

Version: 19 Mar 2026