

Disclaimer: Images are for illustrative purposes.

Wing Nut

Thread Type: BSW - Coarse

Thread Direction: Right Hand

Material: Carbon Steel

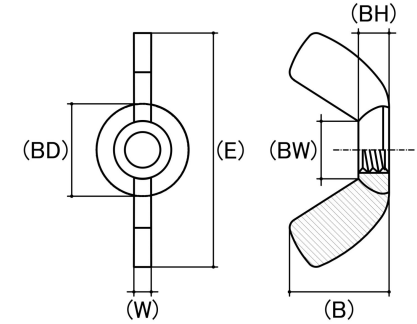
Class Grade: Low Tensile Grade 2

Finish: Zinc Plated

Corrosion Protection Level: Moderate

Standard: UNI 5448

Comments: BSW and UNC have the same thread per inch (TPI) value, except for 1/2"



Size	Thread Pitch (TPI)	Thread Type	Overall Nut Height (B) (mm)		Nut Width (A) (mm)		Boss Diameter (BD) (mm)		Wing Span Range (E) (mm)		Wing Thickness (W) (mm)		Boss Height (BH) (mm)		Between Wings (BW) (mm)		sku (Part Number)
			Min	Max	Min	Max	Min	Max	Min	Max	Min	Max	Min	Max	Min	Max	
1/8"	40 TPI	Coarse	8.00	9.60	8.00	9.60	7.30	7.65	18.00	20.00	2.10	2.45	3.15	3.30	5.60	5.80	41WW18
5/32"	32 TPI	Coarse	9.10	11.00	-	-	8.60	10.00	21.00	23.00	2.50	3.10	3.50	3.75	6.85	7.15	41WW532
3/16" (#10-24)	24 TPI	Coarse	9.10	11.00	-	-	8.60	10.00	21.00	23.00	2.50	3.10	4.00	4.20	6.85	7.15	41WW316
1/4"	20 TPI	Coarse	11.00	13.50	-	-	10.90	12.00	25.00	28.00	3.20	3.50	4.65	4.95	8.40	8.70	41WW14
5/16"	18 TPI	Coarse	14.00	15.50	-	-	12.80	13.70	29.00	32.00	3.20	3.50	5.10	5.50	8.40	8.70	41WW516
3/8"	16 TPI	Coarse	16.50	18.50	-	-	15.00	16.00	34.00	37.00	4.00	4.40	5.75	6.10	10.50	11.90	41WW38
1/2"	12 TPI	Coarse	21.00	23.40	-	-	20.10	22.00	45.00	50.00	4.70	5.30	7.00	7.90	13.30	14.50	41WW12

Disclaimer:

Dimensional data and technical information was obtained from publically available sources and not acquired through standard agencies. It has been completed and compiled for reference purposes only; where discrepancies are found they are subject to change without notice. Bolt & Nut Australia makes no warranties or representations regarding the accuracy and validity of the compiled information and data. Contact the relevant standard authorities for accurate and detailed information.

© Bolt & Nut Australia Pty Ltd. All rights reserved.

Version: 17 Mar 2026