

Disclaimer: Images are for illustrative purposes.

Wing Nut

Thread Type: Metric - Coarse

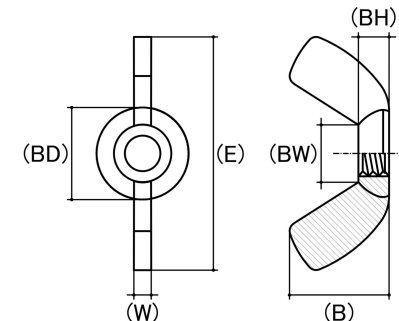
Thread Direction: Right Hand

Material: Solid Brass

Class Grade: Low Tensile Class 4.6

Corrosion Protection Level: Ultimate

Standard: UNI 5448



Size	Thread Pitch (mm)	Thread Type	Overall Nut Height (B) (mm)		Boss Diameter (BD) (mm)		Wing Span Range (E) (mm)		Wing Thickness (W) (mm)		Boss Height (BH) (mm)		Between Wings (BW) (mm)		sku (Part Number)
			Min	Max	Min	Max	Min	Max	Min	Max	Min	Max	Min	Max	
M3	0.50mm	Coarse	8.00	9.10	7.00	8.00	17.25	19.50	2.10	2.80	2.85	3.30	5.10	6.25	41WB3
M4	0.70mm	Coarse	9.60	11.00	9.60	9.90	21.00	22.00	2.70	2.90	4.00	4.20	7.10	7.75	41WB4
M5	0.80mm	Coarse	9.60	11.00	9.90	10.90	19.00	24.00	2.50	3.56	3.80	4.00	6.10	6.30	41WB5
M6	1.00mm	Coarse	11.00	13.50	11.40	12.70	24.00	28.00	3.50	4.50	4.70	5.00	8.00	8.60	41WB6
M8	1.25mm	Coarse	13.60	15.50	12.90	14.70	26.00	32.00	4.30	5.38	5.10	5.70	8.00	8.60	41WB8
M10	1.50mm	Coarse	16.50	18.50	16.20	17.70	33.00	37.00	5.00	6.10	5.70	6.30	10.30	10.60	41WB10
M12	1.75mm	Coarse	21.00	25.40	21.80	23.65	45.00	50.00	6.60	8.40	7.60	8.40	13.10	13.50	41WB12

Disclaimer:

Dimensional data and technical information was obtained from publicly available sources and not acquired through standard agencies. It has been completed and compiled for reference purposes only; where discrepancies are found they are subject to change without notice. Bolt & Nut Australia makes no warranties or representations regarding the accuracy and validity of the compiled information and data. Contact the relevant standard authorities for accurate and detailed information.

© Bolt & Nut Australia Pty Ltd. All rights reserved.

Version: 17 Mar 2026