

Disclaimer: Images are for illustrative purposes.

Wing Nut

Thread Type: Metric - Coarse

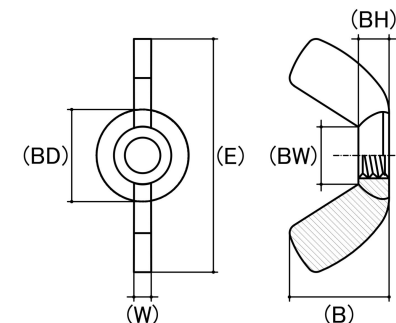
Thread Direction: Right Hand

Material: Stainless Steel

Class Grade: A2-70 G304

Corrosion Protection Level: Excellent

Standard: ANSI B18.7



Size	Thread Pitch (mm)	Thread Type	Overall Nut Height (B) (mm)		Boss Diameter (BD) (mm)		Wing Span Range (E) (mm)		Wing Thickness (W) (mm)		Boss Height (BH) (mm)		Between Wings (BW) (mm)		sku (Part Number)
			Min	Max	Min	Max	Min	Max	Min	Max	Min	Max	Min	Max	
M3	0.50mm	Coarse	8.00	9.10	7.00	8.00	17.25	19.50	2.10	2.80	2.85	3.30	5.10	6.25	41WS3
M4	0.70mm	Coarse	9.60	11.00	9.60	9.90	21.00	22.00	2.90	3.56	3.56	3.90	7.10	7.75	41WS4
M5	0.80mm	Coarse	9.60	11.00	9.90	10.90	19.00	24.00	2.50	3.56	3.56	4.57	5.61	6.85	41WS5
M6	1.00mm	Coarse	11.00	13.50	11.50	12.70	24.00	28.00	3.56	4.57	4.32	5.60	6.62	8.40	41WS6
M8	1.25mm	Coarse	13.60	15.50	12.90	14.75	26.00	32.00	4.30	5.38	5.10	6.35	12.90	14.75	41WS8
M10	1.50mm	Coarse	16.50	18.50	16.27	17.85	33.00	37.00	5.10	6.10	6.60	7.67	10.70	12.20	41WS10
M12	1.75mm	Coarse	21.00	25.40	21.80	23.65	45.00	50.00	6.60	8.40	8.90	9.90	13.65	16.55	41WS12
M16	2.00mm	Coarse	31.00	35.00	28.70	30.22	64.00	71.00	8.65	10.20	12.90	14.00	20.48	23.00	41WS16
M20	2.50mm	Coarse	31.00	35.00	32.30	34.00	64.00	71.00	8.65	10.20	11.00	13.20	20.48	23.00	41WS20

Disclaimer:

Dimensional data and technical information was obtained from publicly available sources and not acquired through standard agencies. It has been completed and compiled for reference purposes only; where discrepancies are found they are subject to change without notice. Bolt & Nut Australia makes no warranties or representations regarding the accuracy and validity of the compiled information and data. Contact the relevant standard authorities for accurate and detailed information.

© Bolt & Nut Australia Pty Ltd. All rights reserved.

Version: 17 Mar 2026